

ARCTIC

SNOWPLOWS ❁ CHASSE-NEIGE



True North Strong



ARCTIC

SNOWPLOWS ❁ CHASSE-NEIGE

Models	Light duty trucks (Tacoma, Ranger, Colorado, Jeep)	Half ton trucks (GMC 1500, F150, RAM 1500, Nissan Titan XD)	¾ ton trucks (GMC 2500, F250, RAM 2500)	1 ton trucks SRW (GMC 3500, F350, RAM 3500)	1 ton trucks DRW (GMC 3500, F350, RAM 3500)	Class 4/5/6 trucks (GMC 4500/5500, F450/550, RAM 4500/5500)
L84P	X					
S2-90P		X				
S2-90S		X				
90S, 96S			X			
90P, 96P			X			
T90P, T96P			X			
102S			X	X		
102P, 108P			X	X	X	
T108P			X	X	X	
V96P			X	X		
F96P			X	X		
V108P			X	X	X	X
F108P			X	X	X	X
W96P			X	X	X	
120P						X

Note:

The above information is provided for quick reference only.

For vehicle specific, please visit "Build your plow" on our website <https://www.arcticsnowplows.com/configurator?step=vehicle>

All Arctic plows come with 2 years warranty.

All Arctic Hitch mount salters come with 1 year warranty.

All Arctic Insert spreaders come with 1 year warranty.

ARCTIC

SNOWPLOWS • CHASSE-NEIGE

Light Duty Poly



Plow Model	L84P
Blade Length	84"
Blade Height	23"
Blade Skin	1/4" Poly
Plowing width at full blade angle	75"
Approximate weight	379 lbs
Trip Springs	2
Reinforced Ribs	5
Lift Cylinder	1 1/2" x 6"
Angling Cylinders	1 1/2" x 10"
Cutting Edge	1" x 4" Poly
Mounting Type	Quik Link II
Snowplow Lights	Optional

Features

- Built for 1/4 ton trucks (Ranger, Colorado, Jeep) with same legendary Arctic strength used in our heavy duty blades.
- Great for homeowners and small business applications.
- Easy on / off with removeable jack.
- Full up/down / power angle control from inside the cab.

Lights (LED/ LPQ) optional (on some truck models, OEM lights are not blocked by plow).

Shoes and curved deflector optional.



ARCTIC

SNOWPLOWS ❄️ CHASSE-NEIGE

Standard Duty 2 Poly



Plow Model	S2-90P
Blade Length	90"
Blade Height	26"
Blade Skin	1/4" Poly
Plowing width at full blade angle	78"
Approximate weight	475 lbs
Trip Springs	2
Reinforced Ribs	5
Lift Cylinder	1 1/2" x 6"
Angling Cylinders	1 1/2" x 10"
Cutting Edge	3/8" X 6" Steel
Mounting Type	Quik Link IV
Snowplow Lights	Optional
Shoes	

Features

- Half-ton truck ready with improved ground clearance.
- Built with Commercial Grade steel, designed for small business and driveway clearing.
- Galvanized frame and components provide best corrosion resistance.
- Poly moldboard eliminates snow sticking, using UV inhibitor for fade resistance.
- Easy on / off with removable jack.
- Curved Deflector, blades guides included.



ARCTIC

SNOWPLOWS ❄️ CHASSE-NEIGE

Standard Duty 2 Steel



Plow Model	S2-90S
Blade Length	90"
Blade Height	26"
Blade Skin	12 ga steel
Plowing width at full blade angle	78"
Approximate weight	450 lbs
Trip Springs	2
Reinforced Ribs	5
Lift Cylinder	1 1/2" x 6"
Angling Cylinders	1 1/2" x 10"
Cutting Edge	3/8" X 4" Steel
Mounting Type	Quik Link IV
Snowplow Lights	Optional
Shoes	

Features

- Half Ton Truck Ready, designed for small business and driveway clearing.
- Redesigned lift frame for improved ground clearance.
- Built with Commercial Grade steel.
- 5 reinforced ribs welded to moldboard for ultimate strength.
- Galvanized frame and components provide unmatched durability.
- Removeable jack for quick and easy on / off application.
- Curved deflector and blade guides included.



ARCTIC

SNOWPLOWS ❄️ CHASSE-NEIGE

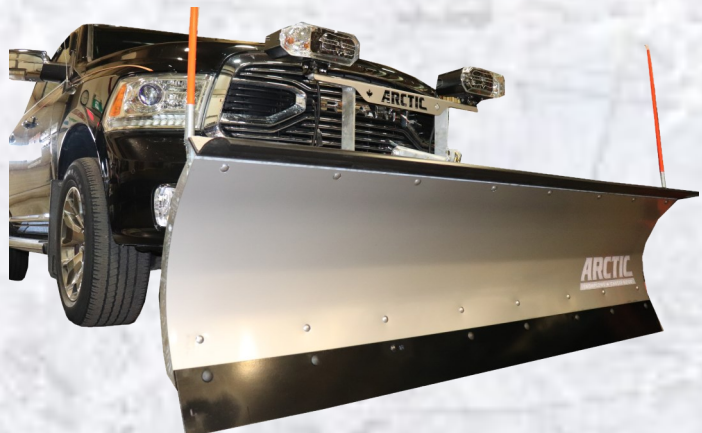
Standard Duty 2 Stainless Steel



Plow Model	S2-90SS
Blade Length	90"
Blade Height	26"
Blade Skin	12 ga SS
Plowing width at full blade angle	78"
Approximate weight	494 lbs
Trip Springs	2
Reinforced Ribs	5
Lift Cylinder	1 1/2" x 6"
Angling Cylinders	1 1/2" x 10"
Cutting Edge	3/8" X 6" Steel
Mounting Type	Quik Link IV
Snowplow Lights	Optional
Shoes	

Features

- Half Ton Truck Ready, designed for small business and driveway clearing.
- Redesigned lift frame for improved ground clearance.
- Built with 12 GA Stainless steel moldboard.
- Galvanized frame and components provide unmatched durability.
- Removeable jack for quick and easy on / off application.
- Curved deflector and blade guides included.



ARCTIC

SNOWPLOWS ❄️ CHASSE-NEIGE

Heavy Duty Poly



Plow Model	90P	96P	102P	108P
Blade Length	90"	96"	102"	108"
Blade Height	29"			
Blade Skin	3/8" Poly			
Plowing width at full blade angle	78"	83"	88"	94"
Approximate weight	674 lbs	691 lbs	776 lbs	788 lbs
Trip Springs	4			
Reinforced Ribs	7			
Lift Cylinder	1 1/2" x 6"			
Angling Cylinders	1 1/2" x 10"			
Cutting Edge	1/2" x 6" Steel			
Mounting Type	Quik Link IV			

Features

- Built with legendary Arctic strength.
- Designed for ¾ ton and larger trucks.
- Commercial application.
- Poly moldboard keeps snow rolling, not sticking.
- Shoes, blade guides and curved deflector standard equipment.
- Moldboard available in orange, or upgrade to platinum.

Available with removeable jack, or upgrade to hydraulic jack for easiest off / on attachment system.



ARCTIC

SNOWPLOWS ❄️ CHASSE-NEIGE

Heavy Duty Steel



Plow Model	90S	96S	102S
Blade Length	90"	96"	102"
Blade Height	27"		
Blade Skin	10 Ga Steel		
Plowing width at full blade angle	78"	83"	88"
Approximate weight	630 lbs	681 lbs	708 lbs
Trip Springs	3	4	
Reinforced Ribs	5	7	
Lift Cylinder	1 1/2" x 6"		
Angling Cylinders	1 1/2" x 10"		
Cutting Edge	1/2" x 6" Steel		
Mounting Type	Quik Link IV		

Features

- Time proven design with all commercial grade components.
- Designed for ¾ ton trucks and larger.
- Thickest steel moldboard (10 gauge).
- With heavy armour galvanizing, this plow is the most durable, long lasting plow in the industry.
- Shoes, blade guides and curved deflector are standard equipment.

Available with removeable jack, or upgrade to hydraulic jack for quickest/ easiest on / off application.



ARCTIC

SNOWPLOWS ❄️ CHASSE-NEIGE

Heavy Duty Stainless Steel



Plow Model	90SS	96SS	102SS	108SS
Blade Length	90"	96"	102"	108"
Blade Height	29"			
Blade Skin	12 Ga SS			
Plowing width at full blade angle	78"	83"	88"	94"
Approximate weight	718 lbs	737 lbs	825 lbs	840 lbs
Trip Springs	4			
Reinforced Ribs	7			
Lift Cylinder	1 1/2" x 6"			
Angling Cylinders	1 1/2" x 10"			
Cutting Edge	1/2" x 6" Steel			
Mounting Type	Quik Link IV			

Features

- Built with legendary Arctic strength.
 - Designed for ¾ ton and larger trucks.
 - 12 Ga Stainless steel moldboard.
 - Galvanized frame and components provide unmatched durability.
 - Commercial application.
 - Shoes, blade guides and curved deflector standard equipment.
- Available with removeable jack, or upgrade to hydraulic jack for easiest off / on attachment system.



ARCTIC

SNOWPLOWS ❄️ CHASSE-NEIGE

Trip Edge Poly



Plow Model	T90P	T96P	T108P
Blade Length	90"	96"	108"
Blade Height	29"		
Blade Skin	3/8" Poly		
Plowing width at full blade angle	78"	83"	94"
Approx. weight	716 lbs	735 lbs	791 lbs
Compressible Springs	4		
Reinforced Ribs	6		
Lift Cylinder	2" x 6"		
Angling Cylinders	1 1/2" x 10"		
Cutting Edge	1/2" x 6" Steel		
Mounting Type	Quik Link IV		

Features

- Commercial grade to handle any storm Mother Nature throws your way.
 - Trip edge allows you to hold your load when encountering obstacles, minimizing spill.
 - Great for gravel roads and rough terrain.
 - Slick polyethylene moldboard and curved deflector (standard) keeps snow rolling where you want it.
 - Available with removeable jack (standard) or optional hydraulic jack for easiest on / off process.
- Upgrading to removable box ends allows you to move even more snow per pass!



ARCTIC

SNOWPLOWS • CHASSE-NEIGE

Trip Edge Stainless Steel



Plow Model	T90SS	T96SS	T108SS
Blade Length	90"	96"	108"
Blade Height	29"		
Blade Skin	12 Ga SS		
Plowing width at full blade angle	78"	83"	94"
Approx. weight	760 lbs	781 lbs	843 lbs
Compressible Springs	4		
Reinforced Ribs	6		
Lift Cylinder	2" x 6"		
Angling Cylinders	1 1/2" x 10"		
Cutting Edge	1/2" x 6" Steel		
Mounting Type	Quik Link IV		

Features

- Commercial grade to handle any storm Mother Nature throws your way.
 - Trip edge allows you to hold your load when encountering obstacles, minimizing spill.
 - Great for gravel roads and rough terrain.
 - 12 Ga Stainless steel moldboard.
 - Available with removeable jack (standard) or optional hydraulic jack for easiest on / off process.
- Upgrading to removable box ends allows you to move even more snow per pass!



ARCTIC

SNOWPLOWS ❄️ CHASSE-NEIGE

Variable Attack Wing (V.A.W)



Plow Model	W96P
Blade Length	98.5" box & 123" open position
Blade Height	29 1/2"
Blade Skin	3/8" Poly
Plowing width at full blade angle	86" box, 106 1/2" open position
Approximate weight	898 lbs
Trip Springs	4
Reinforced Ribs	6
Lift Cylinder	2" x 6"
Angling Cylinders	1 1/2" x 10" Single Acting
Wing Cylinders	1 1/2" x 4" Double Acting
Cutting Edge	1/2" X 6" Steel
Mounting Type	Quik Link IV

Features

- Maximize your efficiency with the Best Expanding Plow!
 - 33% greater carrying capacity than a vee plow.
 - Built for 3/4 ton trucks and larger.
 - Trip edge design holds snow load better than full trip plows.
 - Hydraulic wings can be angled independently from wide open to a full box position.
 - Available in Orange Poly or Platinum Skin.
- Available with removeable jack or the NEW Arctic Hydraulic Jack for quickest and easiest on / off system!



ARCTIC

SNOWPLOWS ❄️ CHASSE-NEIGE

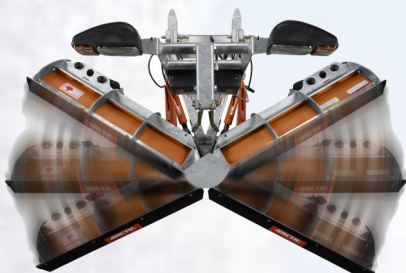
Flat Top V Poly



Plow Model	V96P	V108P
Blade Length	96"	108"
Blade Height	29"	
Blade Skin	3/8" Poly	
Plowing width at full blade angle	83"	94"
Approximate weight	827 lbs	866 lbs
Compressible Springs	4	
Reinforced Ribs	6	
Lift Cylinder	2" x 6"	
Angling Cylinders	1 1/2" x 9" Double Acting	
Cutting Edge	1/2" x 6" Steel	
Mounting Type	Quik Link IV	

Features

- With precise angle positioning, the Vee plow is equally suitable for opening roadways, or parking lot clean up.
 - Designed for 3/4 ton trucks and larger.
 - Heavy duty commercial grade that is built to last.
 - Double acting wing cylinders with impact protection.
 - 6" Curved deflector, shoes and blade guides standard equipment .
 - Available in poly or 12 Ga Stainless steel moldboard.
- Optional bolt on flare kits will increase blade height to improve clearing .
- Optional curb guards bolt on cutting edge to protect blade when rubbing curbs.



ARCTIC

SNOWPLOWS ❄️ CHASSE-NEIGE

Flared V Poly

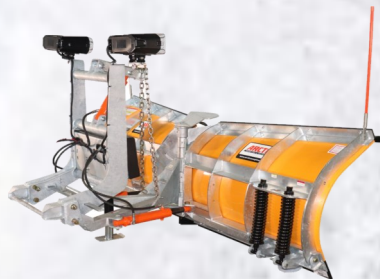
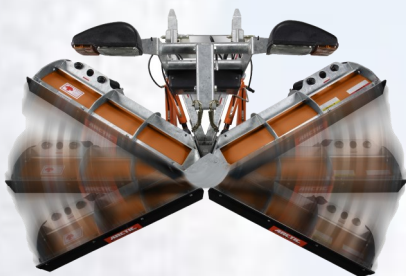


Plow Model	F96P	F108P
Blade Length	96"	108"
Blade Height	31" at center / 33 3/4" at the end	31" at center / 34 1/2" at the end
Blade Skin	3/8" Poly	
Plowing width at full blade angle	84"	94"
Approximate weight	852 lbs	897 lbs
Compressible Springs	4	
Reinforced Ribs	8	
Lift Cylinder	2" x 6"	
Angling Cylinders	1 1/2" x 9" Double Acting	
Cutting Edge	1/2" x 6" Steel	
Mounting Type	Quick Link IV	

Features

- Excellent for opening up parking lots / roadways with heavy drifting.
- This workhorse is designed for contractors with 3/4 ton and larger trucks.
- The tapered flares spread snow further and higher.
- Move large volumes of snow in scoop position for quicker cleanup.
- Trip edge design holds snow load best when encountering obstacles.
- Robust, all galvanized components ensure long life.

Available with standard removeable jack or upgrade to hydraulic jack for easiest on / off attachment system.



ARCTIC

SNOWPLOWS ❄️ CHASSE-NEIGE

Flared V Stainless Steel

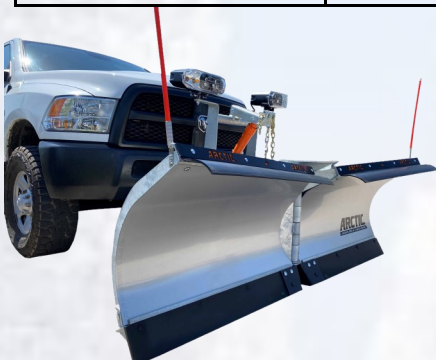


Plow Model	F96SS	F108SS
Blade Length	96"	108"
Blade Height	31" at center / 33 3/4" at the end	31" at center / 34 1/2" at the end
Blade Skin	12ga SS	
Plowing width at full blade angle	84"	94"
Approximate weight	900 lbs	951 lbs
Compressible Springs	4	
Reinforced Ribs	8	
Lift Cylinder	2" x 6"	
Angling Cylinders	1 1/2" x 9" Double Acting	
Cutting Edge	1/2" x 6" Steel	
Mounting Type	Quik Link IV	

Features

- Excellent for opening up parking lots / roadways with heavy drifting.
- This workhorse is designed for contractors with 3/4 ton and larger trucks.
- The tapered flares spread snow further and higher.
- Move large volumes of snow in scoop position for quicker cleanup.
- Trip edge design holds snow load best when encountering obstacles.
- Robust, all galvanized components ensure long life.

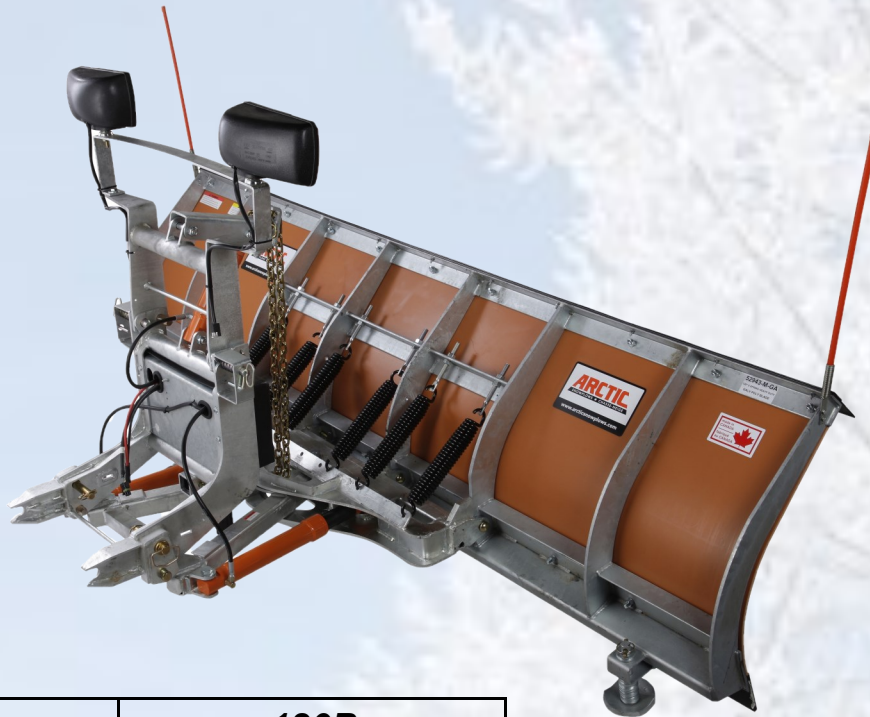
Available with standard removeable jack or upgrade to hydraulic jack for easiest on / off attachment system.



ARCTIC

SNOWPLOWS ❄️ CHASSE-NEIGE

Extra Heavy Duty Poly



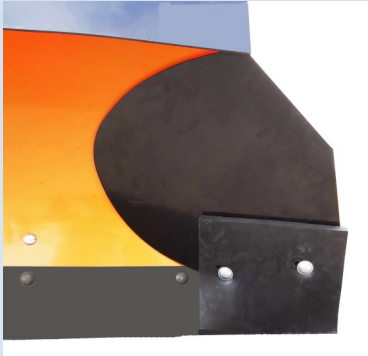
Plow Model	120P
Blade Length	120"
Blade Height	33"
Blade Skin	3/8" Poly
Plowing width at full angle	104"
Approximate weight	1126 lbs
Trip Springs	6
Reinforced Ribs	8
Lift Cylinder	2" x 6"
Angling Cylinders	2" x 16" Single Acting
Cutting Edge	1/2" x 6" Steel
Mounting Type	Quik Link II / III

Features

- Maximum clearing power with a True Heavy Duty Plow.
- Designed for trucks up to Class 6 for superior parking lot and road clearing
- 6 spring full trip design for maximum impact deflection 3/8" thick Poly moldboard rolls snow and eliminates sticking
- 2 x GR 70 transport lift chains for heavy lifting reliability
- Optional Tilt lift frame for front flip hoods keeps engine access easy with plow on truck.



Accessories



PRO WINGS FOR POLY & STEEL FULL TRIP BLADE

Get an additional 20" of blade width. Increase performance of your plow by controlling spill off, hold more snow per pass. (Part # PW22, Part # 53287-M-GA for poly plows only)

Models: 90P, 96P, 102P, 108P, 90S, 96S & 102S



GALVANIZED SHOCK ABSORBER KIT FOR FULL TRIP BLADES

It is designed to reduce the return shock when plow has been tripped forwards. It fits on all commercial steel and poly full trip blades. (Part # 52298-M-GA)

Models: 90P, 96P, 102P, 108P, 90S, 96S & 102S



CURB GUARD

The curb guard protects the edge of your plow against wear. It fits all sizes of blades. The curb guard is bolted to the first two cutting edge bolts. (Part # 52376-M)

Models: All



POLY CUTTING EDGE 1" x 6"

It is great for clearing sensitive surfaces (cobblestone and pavements). Part# 52421-N (for 90" & 96" blade), Part# 52422-N (for 102" & 108" blade)

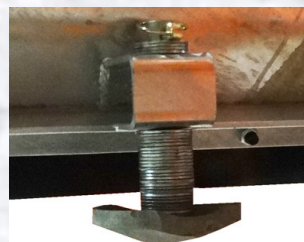
Models: 90P, 96P, 102P, 108P, 90S, 96S 102S



SHOE ASSEMBLY KIT (TWO SHOES)

Shoe kit comes with height adjustable washers and lock pin. (Part# 53802-2)

Models: S2-90P, L84P



DISC-SHAPED SKID SHOES (PAIR)

Part #: 50037-2

Models: S2-90S



TRIP EDGE WING EXTENSIONS

Move up to 3 times the normal volume of snow. Bolt-on brackets with easy-to-remove pins allow for quick installation and removal. (Part #: 52495-M-GA)

Models: T90P, T96P, T108P SK90, SK96, SK108, BP90, BP96, BP108



THIRD SPRING KIT FOR V PLOWS

Part# for third spring kit - 53014-M, Part# for installation tool - 53031-M

Models: V96P, V108P, F96P & F108P

Accessories



FLARE KIT FOR FLAT TOP V BLADE ONLY

They are ideal for throwing snow further. In spreading the snow over a larger distance, this will allow you to build your side banks thicker and higher. Bolt on kit available for both 8' & 9" V plows. (Part# 53547-96-M for 8' V plow, Part# 53548-108-M for 9' V plow)



BUSH GUARD

Upgrade the look of your truck in off season with this bush guard. It fits all QLIV Spreader Bars.

(Part #: 53882-M)



LICENSE PLATE BRACKET

Don't let your snowplow block the view of your front license plate. (Part #:53205-M-GA)

Models: All except S2-90P & S2-90S



6" CURVED DEFLECTOR KIT

This kit includes deflector, strap and hardware. (Part# 53144-M)

Model:L84P



ALK LOW PROFILE QUAD HEAD-LIGHT KIT

Stand alone light wiring kit with switch to control plow lights separate from truck lights.

Part # 800086-ALK



ALK LED LOW PROFILE QUAD HEAD-LIGHT KIT

Stand alone light wiring kit with switch to control plow lights separate from truck lights. (Part # 800086-LED-ALK)



TIMBRENS FOR VARIOUS TRUCKS

Timbrens work with the existing suspension to eliminate sagging leaf springs and to protect it from suspension overload, bottoming out, and vehicle body sway.



ROOFTOP FLASHING LED LIGHT

Large Part #: 8891060 (shown)

Small Part #: 8891040

ARCTIC

SNOWPLOWS ❄️ CHASSE-NEIGE

LED Headlight



Visible Park/Turn Lights
Improves Road Safety

Dedicated High and Low Beam LED
Combination headlight increases road illumination

Integrated Heat Grid with Temperature Sensor
Heated lens prevent snow and ice buildup.
Activated automatically at 5°C or below



Features

- LED technology - crisp and clear light output.
- Strong and durable - built for tough conditions.
- 12Vdc - use for light duty trucks or heavy equipment.
- Pre-wired - easy to install.
- Sold as a kit - includes two lights, mounting hardware.

ARCTIC

SNOWPLOWS • CHASSE-NEIGE

Plow Partner



Plow Model	PP84	PP90	PP96
Blade Width	84"	90"	96"
Blade Height	20"		
Blade Skin	12 Ga Steel		
Lift Cylinder	1 1/2" x 5" Double Acting		
Approximate weight	340 lbs	349 lbs	358 lbs
Cutting Edge	3/8" x 5" Steel / Poly Optional		
Mounting Type	2" x 2" Hitch Class III or better		

Features

- Having a front and rear mounted plow will save you turn around time, resulting in less time on each site.
- Great for driveways, loading docks, drive-through and busy entranceways.
- Built for 1/4 ton vehicles and larger.
- 2000 pounds of down pressure gives you a clean scrape, resulting in less salt application.
- Adjustable height trailer hitch mount.
- All steel is hot dip galvanized for superior corrosion resistance.



www.arcticsnowplows.com

ARCTIC

SNOWPLOWS ❄️ CHASSE-NEIGE

Hitch Mount Salter



Model	HM8P
Capacity	8 cu/ft
Overall Height	38.75"
Width	45"
Depth	25"
Weight Dry	155 lbs
Salt Capacity	450 lbs

Features

- Powerful 1/2HP motor with stainless steel spinner disc.
- Galvanized steel frame prevents corrosion and ensures longevity.
- Easy attach / removal with greaseable wheels.
- Controller and harness prewired for optional vibrator.
- 2" receiver included.

Optional swing arm attachment allows easy access to tailgate without full removal (*unit must be empty when using swing arm).

Optional 3 point-hitch attachment for tractor mount (Category 1) I match compatible.



Galvanized Spreader



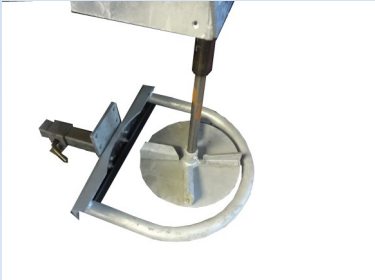
Model	AG4/E	AG6/H/E	AG8/H/E	AG10/H/E
Model Size	4'	6'	8'	10'
Length Inside	47"	71"	95"	119"
Length Overall	70 3/8"	94 3/8"	118 3/8"	142 3/8"
Width	50"			
Body Height	32"			
Capacity	0.8 cubic yards	1.22 cubic yard	1.64 cubic yard	2.07 cubic yard
Capacity with Sideboards (2"x4")	1.02 cubic yard	1.45 cubic yard	1.96 cubic yard	2.7 cubic yard
Weight AG (Gas)	-	775 lbs	903 lbs	1006 lbs
Weight AGH (Hydraulic)	-	621 lbs	751 lbs	854 lbs
Weight AGE (Electric)	634 lbs	760 lbs	881 lbs	991 lbs

Features

- Completely galvanized body.
- Gas engine spreader is powered by a belt-driven motor, and features in-cab controls, electric start, electric throttle, electric clutch. Select from 13 HP Briggs and Stratton or 11 HP Honda engines.
- AGE Electric comes with 12V x 3/4 HP motor.
- AGE Dual electric option with variable speed controller includes second motor for independent operation of spinner & drag chain.
- AGE electric also available with on/off switch in-cab controls.
- AGH Hydraulic powered spreader requires a central hydraulic pump system with a 5 to 8 Gallon/Min pump, plus suction and pressure hoses. Available in single and double motor drives, with either cab- or tank-mounted flow divider controls.
- Optional Bungee corded tarp keeps moisture and snow out.



Accessories for Galvanized Sander & HM Salter



SPINNER GUARD
Protects the spinner while backing (Part # 90175-M)
Models: Galvanized Sander



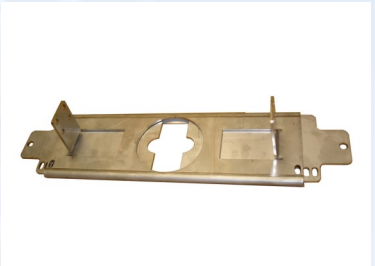
VIBRATOR
It is designed to continue the flow of material and avoid any bridging. (Part # 90290-80-M for HM Salter, 90291-200-M for Galvanized Sander)
Models: Galvanized Sander & HM Salter



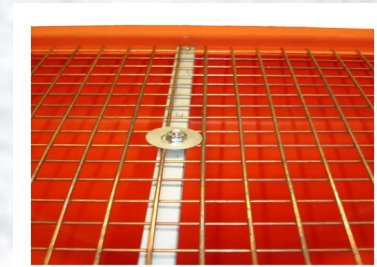
I-MATCH 3 POINT HITCH
(Part # 90336-M)
Models: HM Salter



SWING ARM
Gets access to tail gate of vehicle even when HM salter is mounted on. (Part# 90270-M)
Models: HM Salter



FLOW GATE
Regulates flow of material on to the spinner (Part# 90267-M)
Models: HM Salter



SCREEN KIT
Ensures proper material addition by avoiding any bigger chunks. (Part# 90298-M)
Model: HM Salter

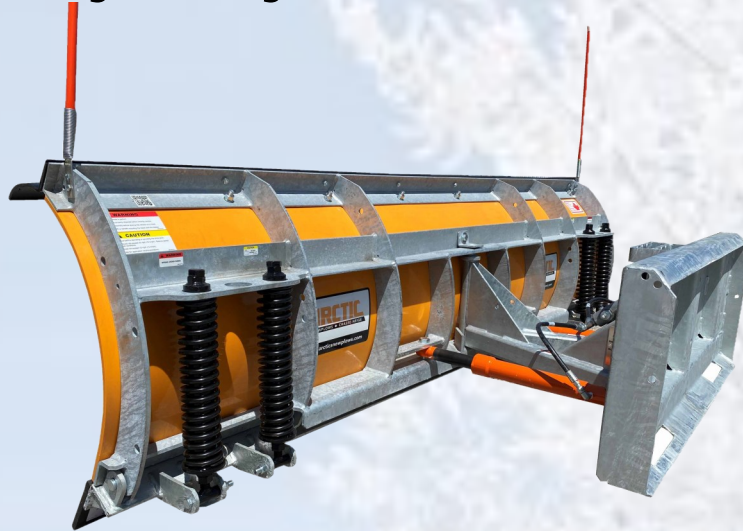


HOPPER EXTENSIONS
Increases the capacity of sander by adding side extensions. (Part #:90136-M)
Models: Galvanized Sander



INVERTED V
(Part#: 90142-M)
Models: HM Salter

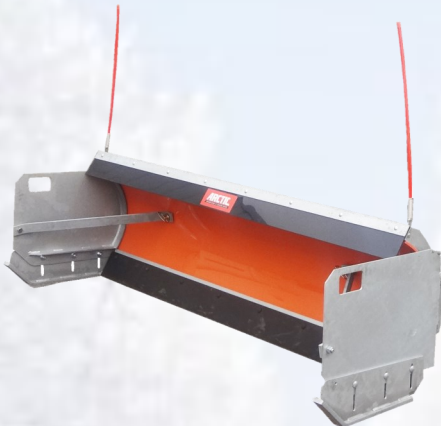
Heavy Duty Skid Steer Poly



Plow Model	SK90	SK96	SK108
Blade Length	90"	96"	108"
Blade Height	29"		
Blade Skin	3/8" Poly		
Compressible Springs	4		
Reinforced Ribs	6		
Angling Cylinders	1 1/2" x 10" Single Acting		
Plowing width at full blade angle	78"	83"	94"
Approximate weight	631 lbs	674 lbs	725 lbs
Cutting Edge	1/2" x 6" Steel		

Features

- Equipped with universal skid steer attachment.
- Trip edge design minimizes spill of snow when obstacles struck.
- Optional box ends make this the ideal pusher.
- Built tough and armoured with galvanize finish with "no paint" durability.
- Shoes, Blade guides and curved deflector included.



ARCTIC

SNOWPLOWS ❄️ CHASSE-NEIGE

Skid Steer BOX Pusher



Plow Model	BP90	BP96	BP108
Blade Length	90"	96"	108"
Blade Height	29"		
Blade Skin	3/8" Poly		
Compressible Springs	4		
Reinforced Ribs	6		
Approximate weight	705 lbs	712 lbs	771 lbs
Cutting Edge	1/2" x 6" Steel		

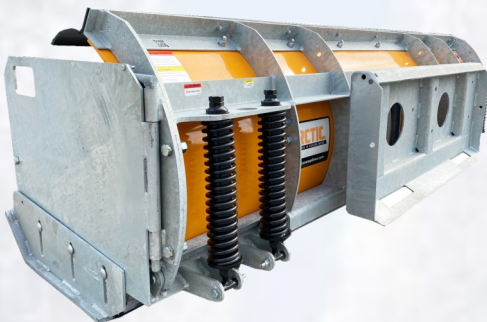
Features

- Eliminating the power angle of skid steer blade, the Box Pusher shares the same robust design features without the hydraulic cylinders.

- Box Pusher is kept closer to the cab, making it more maneuverable in tight spaces.

Less moving parts, quick and simple hook up and detach.

- Reinforced box ends with floating wear shoes keeps snow captured, minimizing spillage.



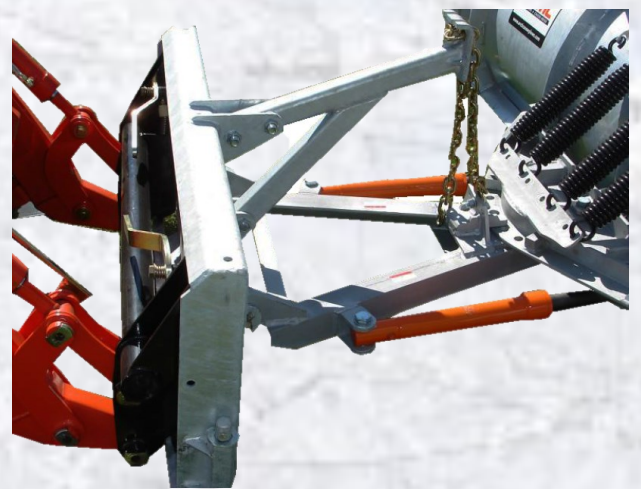
ARCTIC

SNOWPLOWS ❄️ CHASSE-NEIGE

Loader Mount



Loader mount attachment fits Arctic Blades 90" – 108". Tractor that uses a universal attachment system can be equipped with an Arctic plow. Note: blade and power angling sold separately. Part # 53442-M.



ARCTIC

SNOWPLOWS ❄️ CHASSE-NEIGE

Broomer



The Broomer Makes Cleanup Quick and Easy

Use your truck plow hydraulics and controls, or connect to: Tractors, Skid Steers, Bucket Loaders, Forklift.

Agriculture, Construction, Landscaping, Municipalities, Road maintenance, Industry, Airports, Cemeteries, Race Tracks, Golf Courses

1. Pick your size

Broom Kit	Part#
60" Broomer	53317-60-M
84" Broomer	53317-84-M
90" Broomer	53317-90-M
96" Broomer	53317-96-M
120" Broomer	53317-120-M

2. Pick Your Mount

Mount	Part#
Arctic Straight blade full trip mount	53305-M
BLM-02 Bucket lip Mount HD	180415
Forklift Mount	180417
Broomer Three-Point Hitch Mount	180419
Bobtatch Fixed Mount (Skid Steer)	180450

3. Sweep



Salt/Storage Bins & Salt Scoop

Keep a supply of dry salt available with this handy polyethylene medium sized storage salt box. Keep a supply of traction aid available with on site storage boxes. Great for salt, sand, ice melt, 1/4" chip to improve traction and eliminate slip and falls. Ideal for contractors, business and homeowners. Conveniently place in high traffic areas for immediate access. Hinged lid helps keeps weather out.



Dimensions 17"W x 25"L x 20" H.

5 Cu Ft capacity

Part# 52986-01-N



Dimensions 22"W x 31"L x 23.5 H

9 Cu Ft capacity

Part# 52986-N



Oversized handle allows for easy use with gloves on; large opening allows simple grab and spread in high risk areas.

10" H x (opening 6" x 6")

Part # 90255-N

Standard Parts for All Blades



STRAIGHT BLADE CONTROLLER

Controller 53282-MPX for MPX blades

Controller 53282-1PC for Non-MPX blades



V BLADE CONTROLLER

Controller 53326-MPX for MPX blades

Controller 53326-1PC for Non-MPX blades



WING BLADE CONTROLLER

Controller 53495-MPX for MPX blades

Controller 53495-1PC for Non-MPX blades



SNOWPLOW LIGHT

800086 Low Profile Quad (LPQ) lights comes standard with all blades except Light Duty and Standard Duty Blades.

Optional Parts for All Blades



STRAIGHT BLADE JOYSTICK

Joystick 53647-MPX for MPX blades

Joystick 53647-1PC for Non-MPX blades



V BLADE JOYSTICK

Joystick 53648-MPX for MPX blades

Joystick 53648-1PC for Non-MPX blades



JOYSTICK BRACKET

Install the bracket 52402-M on driver side window and mount the joystick onto the bracket.



SNOWPLOW LIGHT

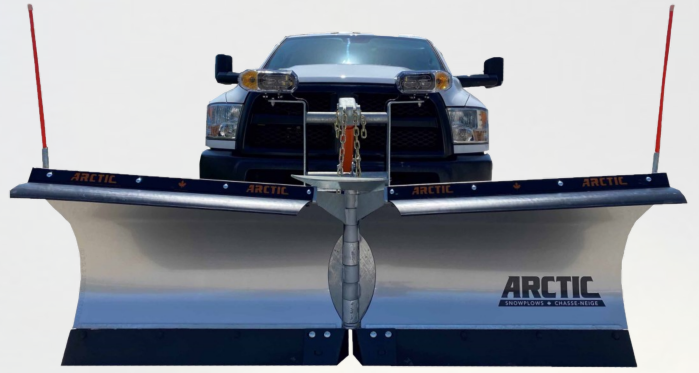
800086-LED

Notes:

ARCTIC

SNOWPLOWS ❄️ CHASSE-NEIGE





Manufactured in London Ontario,
with nationwide dealers
(866)-757-1243
e-mail: web@arcticsnowplows.com
www.arcticsnowplows.com

